



Office Space Available | Prime Downtown Location

## 15 Court Square

This well-located property is sited in a historical section of Boston formerly known as Scollay Square. A short walk from Boston City Hall, this 11-story building is well-suited for small businesses and professional practices.

The 11-story building is well-suited for small businesses and professional practices.

It's situated in a desirable, highly-accessible section of downtown Boston close to major highways, multiple parking options, all public transportation centers, shopping, restaurants, local tourist attractions, as well as everyday conveniences such as dry cleaning, convenience stores and office supply stores.

### Available Space

Suite 360 – 532 SF

SF Suite 1030-1050\* – 3,310 SF

Suite 1060 – 220 SF

*\*combined suite can be subdivided*



### Property Features

- Easy access to all public transportation
- Covered parking garage access
- Spaces may be sub-divided
- 24-hour building access
- 24 hr Maintenance 24/7
- A/C control
- Cleaning Services
- Lobby Attendant

### For Leasing Information:

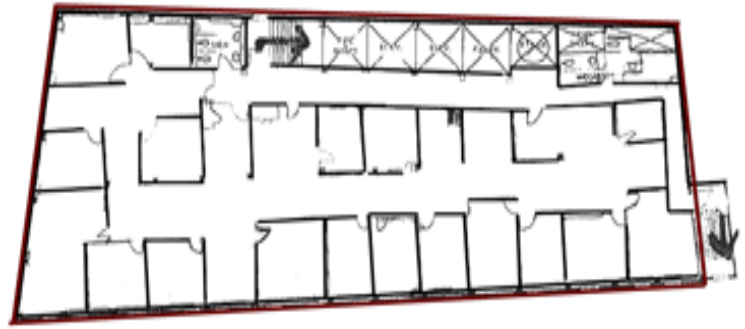
Main Office: 781-279-9800

[leasing@brickpoint.com](mailto:leasing@brickpoint.com)

[brickpoint.com/commercial](http://brickpoint.com/commercial)

## Specifications

<b>Property Type:</b>	Commercial
<b>Premises Sq Ft:</b>	Approx. 80,000
<b>Year Built:</b>	Early 1900's
<b>Building:</b>	Brick & Mortar
<b>Frontage:</b>	62 ft.
<b>Depth:</b>	179 ft.
<b>Zoning:</b>	Office
<b>Roof:</b>	Tar & Gravel
<b>Floors:</b>	11 Stories
<b>Power:</b>	Electric
<b>HVAC:</b>	Heat Pumps/Forced Hot
<b>Utilities:</b>	Water Metered Separately



TYPICAL FLOORPLAN  
For more floorplans, visit our website at  
[brickpoint.com/commercial](http://brickpoint.com/commercial)



SAMPLE INTERIOR

For more interior view, visit our website at [www.brickpoint.com/commercial](http://www.brickpoint.com/commercial)

